

ARKEMA

Discover MLPC

1/29/2024

MLPC



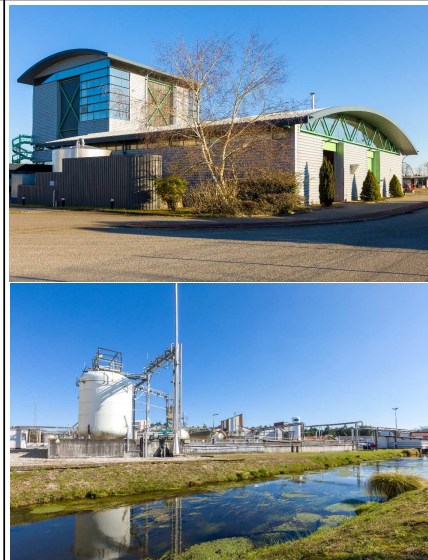
MLPC: Presentation

PROFILE

- **100% subsidiary of Arkema**
- **World leader** in the production and sales of **additives for the rubber industry and chemical intermediates**
- A specialist in chemistry of **CS₂**
- Provider of safer **solutions for vulcanization** system to customers through **its own R&D with Arkema R&D support**
- **Superior supply chain reliability** around the world

Sales in more than

37 countries



2

Production sites: Rion des Landes & Lesgor

Both production sites are SEVESO high threshold and comply with ICPE regulations

160

employees

1

technical support

1

R&D center



OUR CERTIFICATIONS



MLPC, 100% Arkema subsidiary

- With a leading industrial and commercial presence, **Arkema** operates in 55 countries with 21,100 employees worldwide, 16 R&D centers and 148 industrial sites
- In 2020, **Arkema** has been entering a new phase of its transformation and will reinforce **its expertise now structured into three coherent and complementary segments** - Adhesive Solutions, Advanced Materials, and Coating Solutions

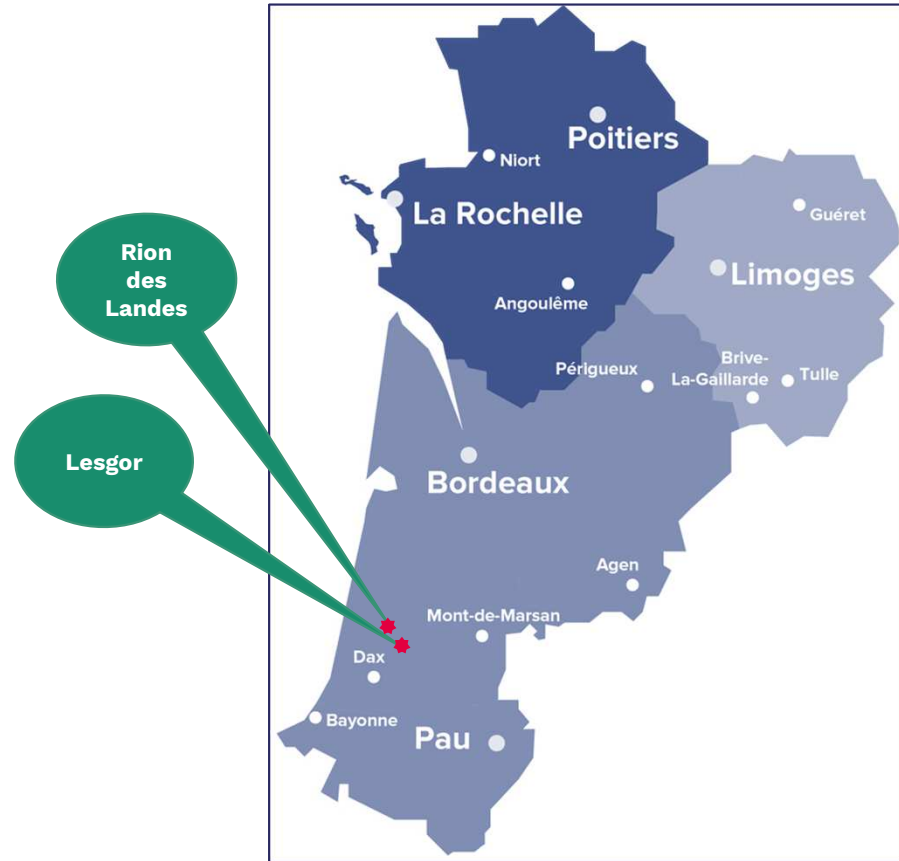
MLPC belongs the Advanced Materials Segment

Arkema aims to generate sustainable and responsible growth for its businesses and to meet societal challenges by providing its customers with sustainable and innovative solutions that contribute to the Sustainable Development Goals defined by the United Nations

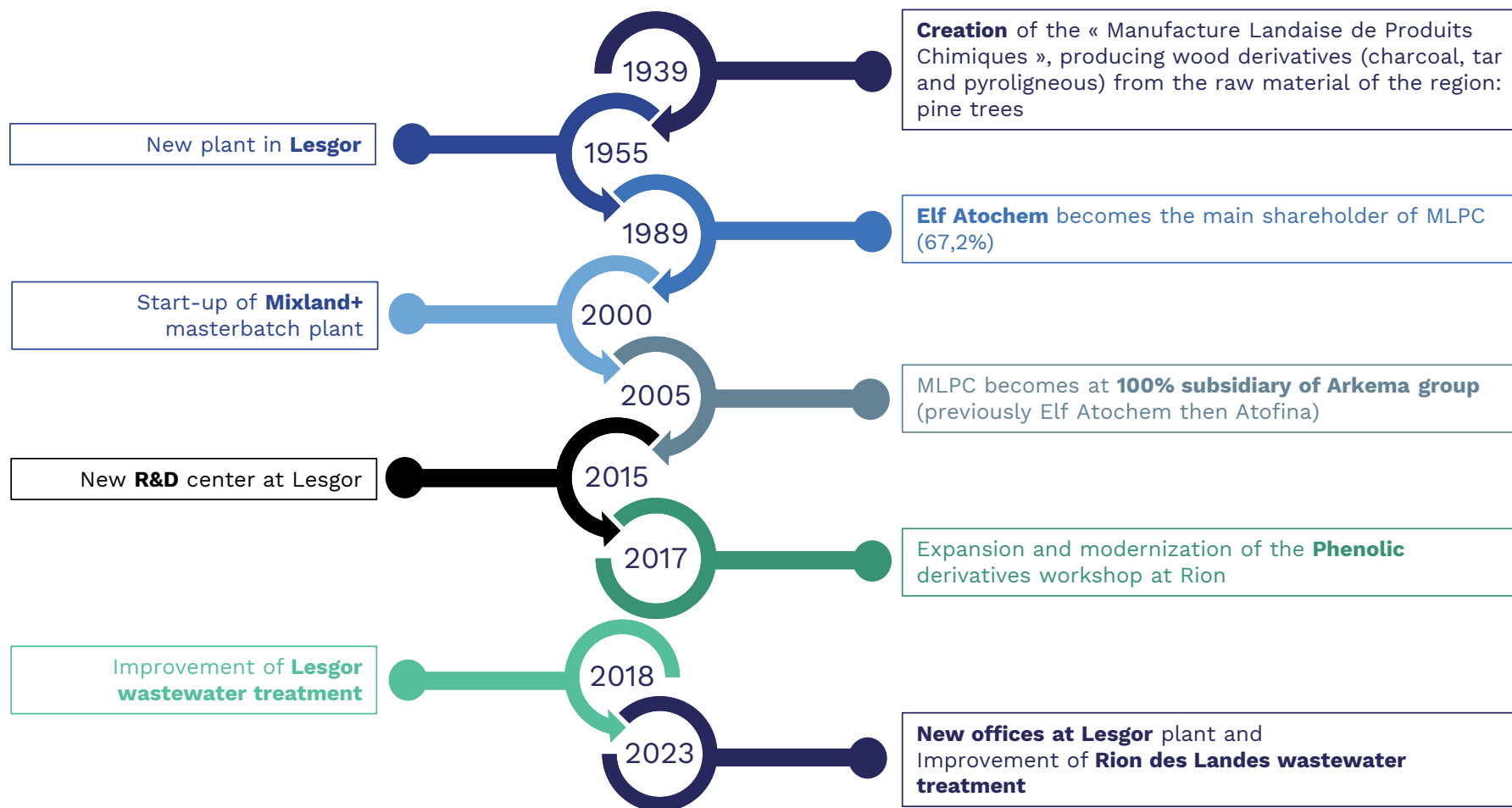
Introduction – Location



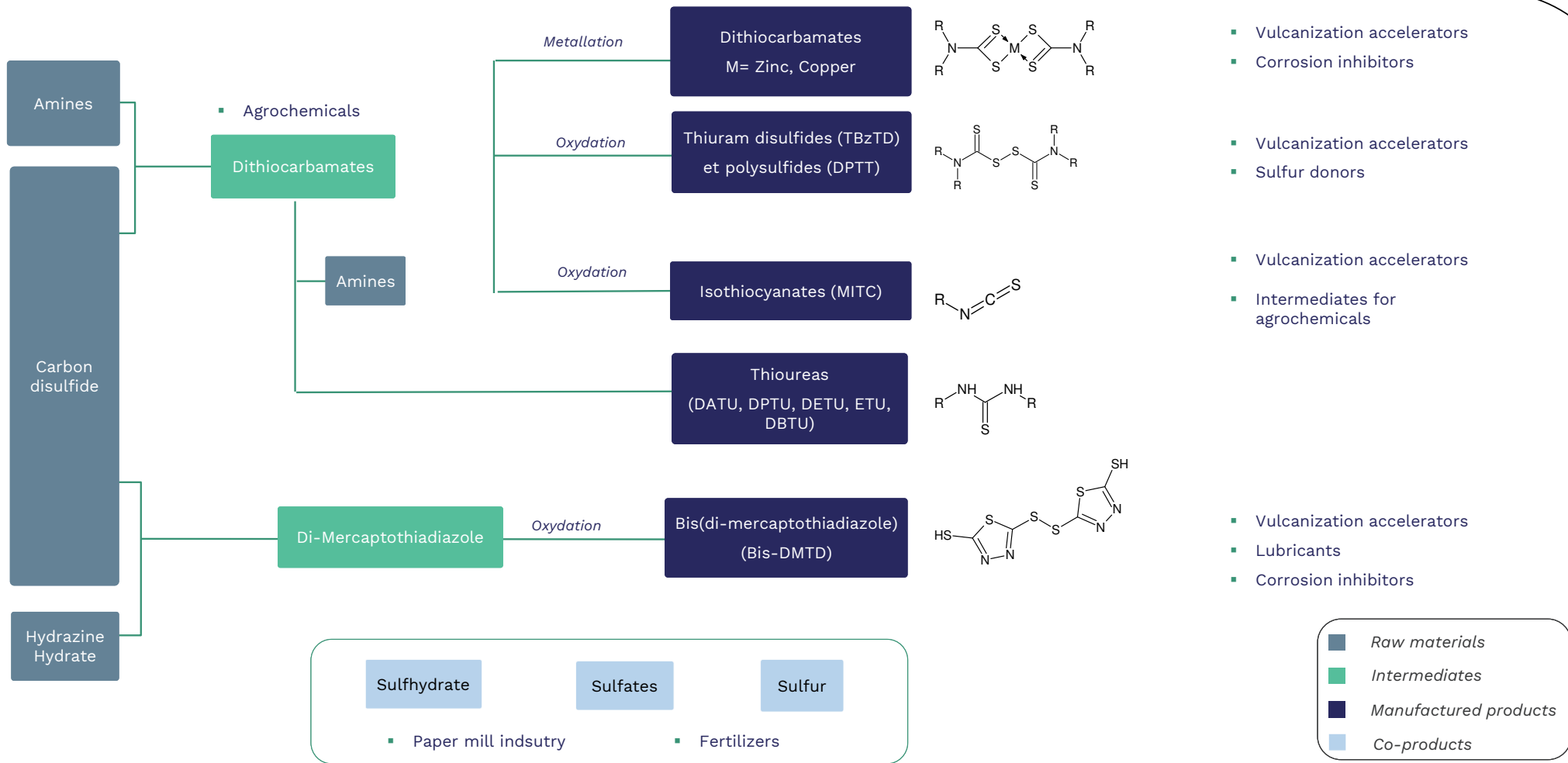
MLPC is located in South-West of France, near Bordeaux



MLPC history

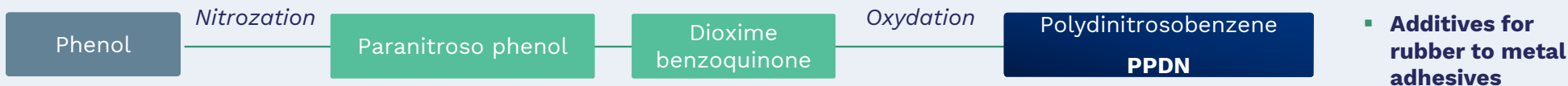


Lesgor plant



Rion des Landes plant

Chemistry



Polymerbond for rubber additives



Brand of masterbatches (MIXLAND+®)

■ Raw materials ■ Intermediates ■ Manufactured products

Advantages of the Mixland+[®] brand

MIXLAND+[®]



Lower scrap rates thanks to the high level of filtration

Faster dispersion

Easier of handling

Better chemical stability

Higher quality consistency

Wider elastomers compatibility

Cost savings thanks to a higher chemical efficiency

Quality, Health/Safety & Environment

Health Environment & Safety

- Both production sites are SEVESO high threshold and comply with ICPE regulations for the control of industrial and environmental risk
- All our production units are subject to a periodic assessment of risks
- Arkema Best Practices are implemented
- Statistics and Indicators track performance on all relevant HSE aspects

Quality

- ISO 9001v2015
- ISO 14001v2015
- ISO 45001v2018

Communities

- Very good acceptance by local communities and local NGOs (no complaint for more than 3 years)
- Permanent dialogue with local political and administrative officials

Our strategy

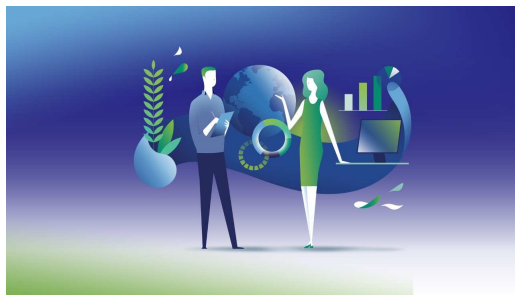
MLPC is an industrial chemical company, subsidiary of Arkema which mainly offers additives for the rubber market and specialty niche chemicals, in synergy with our technologies and industrial assets.

It evolves in partnership with the specialists of the targeted markets.



Our CUSTOMERS can expect from us:

- A high level of **quality** of **products** and **services**
- A **Technical support** in our rubber core business
- A **R&D** enabling us to market regularly new products to meet evolving technical requirements and environmental issues



Committed and supportive and aware of the challenges of Sustainable Development, MLPC employees work to provide to

- A **safe** and **adequate** workplace
- Economic results to provide further **investment**
- **Reliable** and **cost-efficient** production processes
- Respectful relationships based on teamwork and open **dialog**
- Smart **management** of priorities



As a responsible producer of chemicals, MLPC International is committed to a proactive and durable improvement plan, with the goal to:

- **Protect/Prevent**
Analyze and control all risks and their impacts in order to protect all our employees and external stakeholders, and to protect the environment against any accident that may occur during operations
Prevent all risks and their impacts that could affect all those with whom MLPC cooperates
- **Comply**
Anticipating and complying with new applicable regulations, Arkema requirements and working towards a more environmentally friendly production
- **Improve**
Capitalize on opportunities and feedback from experience in a process of continuous improvement

We are committed to a sustainable future

<p>We deliver sustainable solutions driven by innovation</p>	<p>We manage our activities as a responsible manufacturer</p>	<p>We cultivate an open dialog and close relations with our stakeholders</p>
<p>Responsible product stewardship : - 2030 Target: 65% sales must be (Impact+)</p> <p>Have a significant contribution to SDGs</p>  <p>Implement and facilitate circularity - 2022: 10% of sales with renewable and recycled materials</p>	<p>Safety : 2 indicators for 2030 1. TRIR: achieve 0.8 2. PSER: achieve 2.0</p> <p>Climate : 2 indicators for GHG SBTi approve Arkema trajectory of 1.5°C in 2030: Scope 1&2: -48.5% Scope 3: -54%</p> <p>2030 targets:</p> <ul style="list-style-type: none"> - Energy 25% reduction in consumption intensity - Water 60% reduction in intensive emission - Air 65% reduction in intensive emission of volatile organic compounds <p>https://www.arkema.com/global/en/investor-relations/corporate-governance/csr/</p>	<p>Employee development and diversity: 2030 targets: 30% female senior management and 50% non-French nationals among senior management and executives</p> <p>Responsible Purchasing > 80% suppliers covered by TfS assesment</p> 

We are committed to a sustainable future

In that context, in 2023 MLPC has invested a lot in assets:

- **Water** : More efficient water treatment equipment to ensure clean effluent discharge at both plants, Rion des Landes and Lesgor.
- **Energy** : New boiler and compressor for better management of our gas and electricity consumption.
- **Waste** : R&D intensive work to find ever more environmentally-friendly processes, for example to avoid incinerating the mother liquor from our synthesis processes.
- **The circular economy** : Recycling of equipment no longer in use, materials find a second life through metal sorting, but also the use of certain synthesis waters as a heat-generating resource.
- **The land** : All our waste follows approved channels by French authorities for waste treatment.
- **The Air** : Already at the heart of our business, this ambitious program is addressed through the safety of our processes.



<https://www.arkema.com/global/en/investor-relations/corporate-governance/csr/>

Contact: commercial@mlpc-intl.com
Website: <https://www.mlpc-intl.com/>
LinkedIn: <https://www.linkedin.com/company/mlpc-international-sa>



ARKEMA